

User Manual

Blu-Comm™

Solutions

**Made for 2-Way Radios and
Sprint/Nextel Phones!**



CE FC RoHS

The Bluetooth word mark and logos are owned by the Bluetooth SIG and used under license by Klein Electronics, Inc.

**Thank you for purchasing the Blu-Comm™.
The worlds FIRST 2-way radio Bluetooth®
product.**

**This manual is simple and short,
making it easy to follow.**

The warranty is on the page 8.

Each package may include a charger with three tips, a dongle to plug into your radio (see chart on our website), and a round PTT (Push-To-Talk) button. MAKE SURE you charge up everything before you play with it. It affects the life of the battery. Also, it is best to fully run down the battery or close to it before you charge it up. It is VERY important to FULLY charge each time.

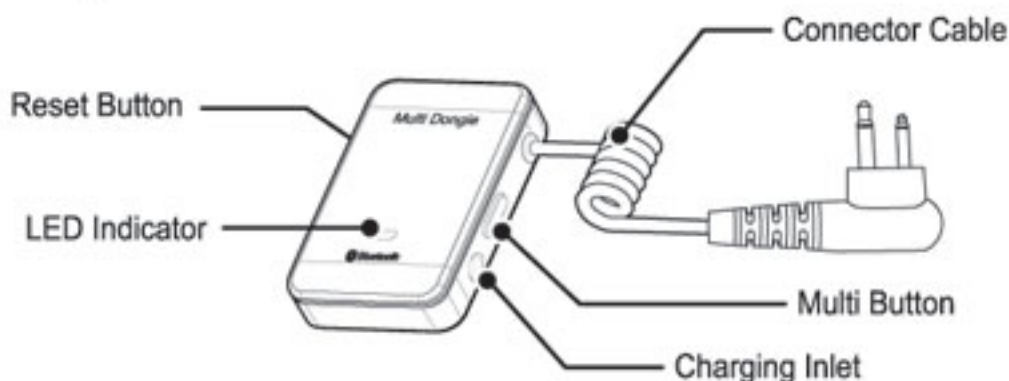
It takes about 2 hours to charge fully. The LED lights turn OFF when complete.

Pairing the BluComm Wireless Headset Kit

Step 1. Make sure all items are tuned off.

Step 2. Put the headset into pairing mode following the manufacturer's instructions.

Step 3. Put the BluComm-Dongle into pairing mode:



Press the Multi Button {PWR} for 10 seconds.

The LED will flash 5 times; continue to hold for another 6 seconds

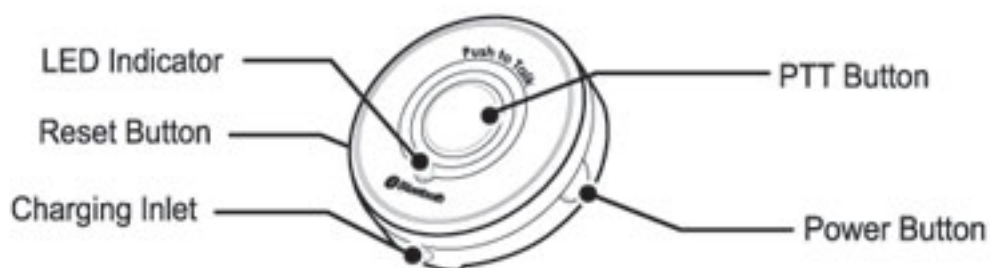
Note: The LED flashes rapidly while in pairing mode.

Step 4. Put the BluComm PTT into pairing mode:

Press the Power Button {PWR} for 10 seconds.

The LED will flash 5 times; continue to hold for another 6 seconds

Note: The LED flashes rapidly while in pairing mode.



After you pair them, if you turn them off you should NOT need to pair again. Just turn them on. It is pretty easy:

The Dongle, press the power button and release it after the LED flashes BLUE 5 times.

The PTT is the same, except the LED will be RED. (The PWR button is on the side). To turn them off, just press these buttons for 4 or 5 seconds and they shut down.

So, let's assume they are paired up and ready to use. MOST 2-way radios require that you use that round PTT button. Try your radio without it if you like, and if you don't need it, then it is your choice to use it or not.

To use, simply keep the dongle plugged into your radio, and the radio on. Press the PTT button and hold it down while talking, releasing it to receive a transmission.

Talking time depends on the make and model of the Bluetooth® headset used, but you can use any Bluetooth® headset you like!

Talk time on the dongle and adaptor is up to 7 hours.

Standby time is up to 200 hours.

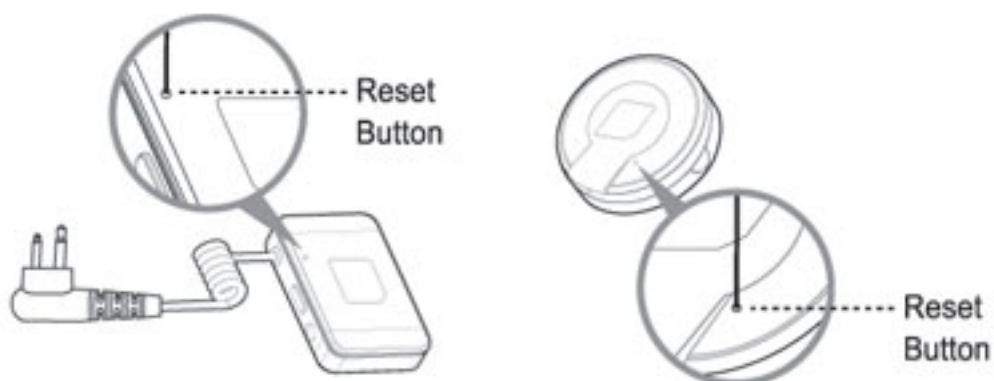
Charging time is less than 2 hours.

WARRANTY.

The warranty period is 6 months. It is a limited warranty, so please take care of your new Bluetooth® product.

If you cause any damage to the product such as dropping it, breaking it, or if it gets wet, it is not covered. Only a defect by the manufacturer (just stops working or didn't work out of the box) is covered. Do not try to open any piece. The batteries are not replaceable. We can either replace it or repair it.

If you have problems operating the device, try to reset them.



Blu-Comm™

Patent Pending. All trademarks and service marks
are the property of their respective owners.

www.BluComm.com