



Real-time Voice Communication Tool that

Tunnel Construction and Mining



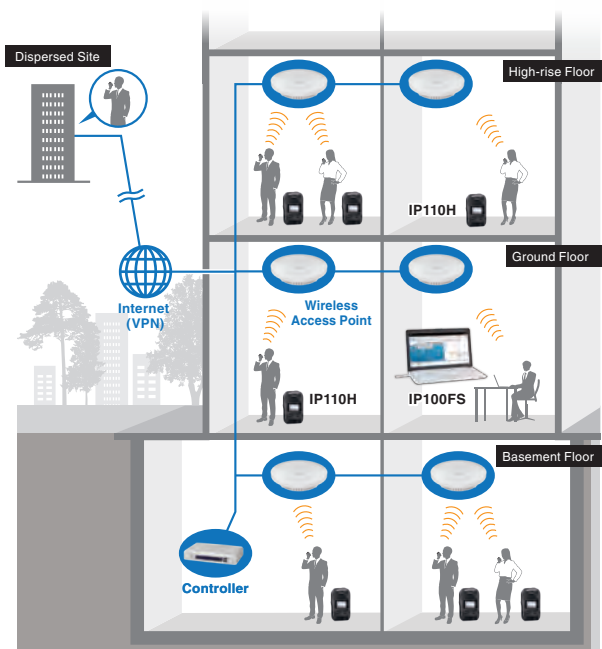
The communication area can be flexibly expanded as the work progresses. In addition, the safety of the user can be confirmed by the Man down and Motion sensor functions.

Factories and Warehouses



The WLAN radio can cover all working sites, offices and remote bases through an IP network (VPN). Wherever you are in the network, you can share the information you need.

WLAN Radio System Features



Scalable System Using Wireless LAN Network

Deploying wireless access points over an IP network, the WLAN radio system can expand the communication range.

License-Free Communication

The WLAN radio uses common wireless LAN network frequencies, which do not need communication fees for running the system.

Communication with Dispersed Sites

When connected over the Internet VPN, an WLAN radios can communicate between dispersed sites.

Simultaneous TalkListen Function

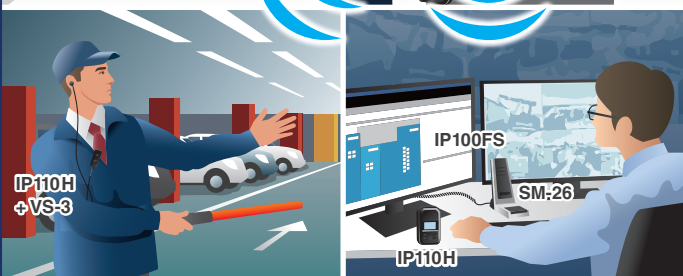
The WLAN radio provides full duplex communication like a telephone conversation and one-to-many communication.

TalkListen works with or without external headset.

Talk Listen
Simultaneous

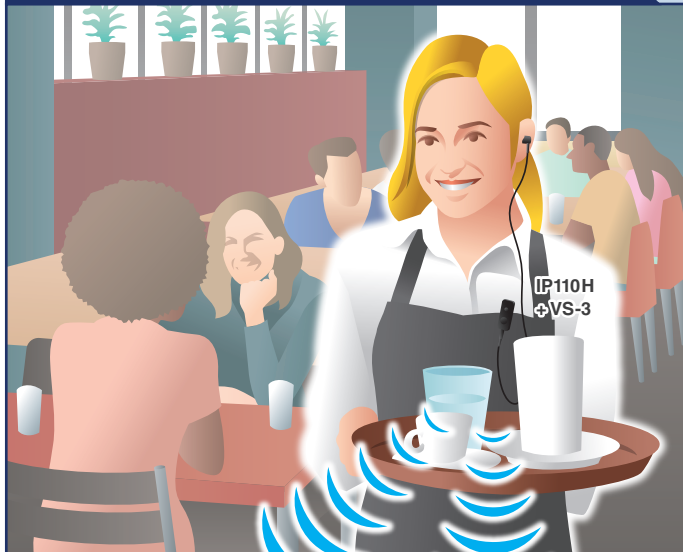
Instantly Connects You with Your Team

Shopping Centers and Malls



By deploying access points along the IP network, the WLAN radio can communicate all the way from the basement to the top floor. Real-time simultaneous Talk and Listen is possible.

Hotel and Restaurant Management



You can use the WLAN radio as a handy communication tool between staff members. With optional Bluetooth® headset, VS-3, the WLAN radio can be used wirelessly and inconspicuously.

Product Lineups

Compact, Lightweight Wireless LAN Radio with Simultaneous TalkListen Function



- All, Group, Talkgroup, Individual and Telephone Calls
- 1000 mW loud audio from internal speaker
- Optional Bluetooth® headset, VS-3
- IP67 / IP54 waterproof and dust-tight
- Battery can be charged through the USB Type-C™ cable
- More than 20 hours of operating time (Tx 1: Rx 1: Stand-by 8 duty ratio)
- WPA2, WPA-Enterprise security

- <Other features>
- Audio is recorded for instant review
 - Vibration alert function
 - Motion/Stationary detection, man down and lone worker functions
 - Over-the-Air programming
 - Compatible with the IP100H WLAN radio

WLAN Transceiver IP110H



Remote Communicator IP100FS

(Supplied with a USB flash drive)



- Windows™ PC based communication app
- Obtains location info of each radio based on the access point being used
- Management functions such as remote lock function

WLAN RADIO SYSTEM

IP110H SPECIFICATIONS

Wireless Standards	IEEE802.11 a/b/g/n/ac	Dimensions	57×96.9×25.1 mm, 2.2×3.8×1.0 in (W×H×D; Projections are not included)
Frequency Range *1	2.4–2.4835 GHz, 5.15–5.35, 5.47–5.85 GHz	Weight (approximate)	146 g, 5.2 oz
Security	WEP (64/128-bit), WPA2-Enterprise, WPA-Enterprise, WPA-PSK, WPA2-PSK	Operating Time	More than 20 hours (TX 1 : RX 1 : Stand-by 8 duty ratio)
AF Output Power	1000 mW typ. (Internal SP) / 300 mW typ. (External SP)	Charging Time	4 hours (With BC-257 and BC-228)
Operating Temperature	–10°C to +60°C, +14°F to +140°F	IP Rating	IP67 / IP54
Charging Temperature	0°C to +60°C, +32°F to +140°F	MIL-STD-810	Passed 12 categories of environmental tests
		Supplied Accessories	OPC-2480 USB charger cable, MBB-1 belt clip

*All stated specifications are subject to change without notice or obligation. *1 Authorized frequency range and channels may differ depending on the country.




OPTIONAL ACCESSORIES FOR IP110H

<p>Bluetooth® Headset</p> <p>VS-3</p> 	<p>Speaker-Microphones</p> <p>HM-186PI</p> 	<p>HM-228 Waterproof</p> 	<p>Earphone-Microphone</p> <p>HM-179PI</p> 	
<p>Headsets</p> <p>HS-94 Earhook type</p> 	<p>HS-95 Neck arm type</p> 	<p>HS-97 Throat type</p> 	<p>Plug Adapter Cable</p> <p>OPC-2133 2.5 mm stereo jack to 1 pin connector</p> 	
<p>Earphone</p> <p>SP-16PIBW Earhook type</p> 	<p>Charger Accessories</p> <p>BC-257 Charger stand (Connectable up to 4 units.)</p> 	<p>BC-228 AC adapter for multiple BC-257 connections</p> 	<p>Other Accessories</p> <p>OPC-2132 Plug adapter cable 2.5 mm stereo / 3.5 mm stereo jack to 1 pin connector</p> 	<p>MBB-1 Belt clip. Same as supplied.</p> 




IP100FS SYSTEM REQUIREMENTS

Operating System	Windows™ 11, Windows™ 10 (32-bit/64-bit), Windows™ 8.1 (32-bit/64-bit) (Except for Windows™ RT)
CPU	Intel® Core™ 2 Duo Processor E6600/ 2.4 GHz or faster
System Memory	2 GB or more
Hard Disk Space	1 GB of disk space (for saving log files)
Display Resolution	Full HD (1920x1080 pixel) recommended / XGA (1024x768 pixel) at least
LAN	100BASE-TX or faster Ethernet interface
USB	USB1.1 / 2.0
Other	Speaker, microphone or headset

OPTIONAL ACCESSORIES FOR IP100FS

<p>Microphones</p> <p>SM-26 Desktop microphone</p> 	<p>HM-152 Hand microphone</p> 	<p>PTT Microphone Adapter</p> <p>CT-23</p> 
---	--	--

WLAN RADIO SYSTEM EQUIPMENT

<p>IP1000C WLAN Radio Controller</p> <ul style="list-style-type: none"> Capable of controlling up to 100 WLAN radios (including IP100FS) 	<p>VE-PG4 RoIP Gateway (WLAN Radio controller built-in)</p> <ul style="list-style-type: none"> Capable of controlling up to 50 WLAN radios (including IP100FS) Interconnects with IP Phone and other digital and/or analog radio systems VPN function 	<p>AP-95M Wireless LAN Access Point</p> <ul style="list-style-type: none"> IEEE 802.11 a/b/g/n/ac compliant wireless LAN access point PoE (Power over Ethernet) capability 
--	--	---

Icom, Icom Inc. and the Icom logo are registered trademarks of Icom Incorporated (Japan) in Japan, the United States, the United Kingdom, Germany, France, Spain, Russia, Australia, New Zealand, and/or other countries. The Bluetooth® word mark and logos are registered trademarks owned by Bluetooth SIG, Inc. and any use of such marks by Icom Inc. is under license. Windows is a trademark of the Microsoft group of companies. Intel, the Intel logo, and Intel Core are trademarks of Intel Corporation or its subsidiaries. USB Type-C and USB-C are trademarks of USB Implementers Forum. All other trademarks are the properties of their respective holders.

Icom Inc.

1-1-32, Kamiminami, Hirano-Ku, Osaka 547-0003, Japan Phone: +81 (06) 6793 5302 Fax: +81 (06) 6793 0013

www.icomjapan.com

Icom America Inc.
www.icomamerica.com

Icom (Europe) GmbH
www.icomeurope.com

Icom (Australia) Pty. Ltd.
www.icom.net.au

Your local distributor/dealer:

Icom Canada
www.icomcanada.com

Icom Spain S.L.
www.icomspain.com

Icom Asia Co., Ltd.
www.icomasia.com

HiTech Wireless

Icom Brazil
E-mail: sales@icombrasil.com

Icom (UK) Ltd.
www.icomuk.co.uk

Shanghai Icom Ltd.
www.bjicom.com

Tel: 888.511.5162

Fax: 866.341.3315

sales@hitechwireless.com

HiTechWireless.com