

This equipment has been tested and found to comply with the limits for a Class B digital device, pursuant to Part 15 of the FCC Rules. These limits are designed to provide reasonable protection against harmful interference in a residential installation. This equipment generates uses and can radiate radio frequency energy and, if not installed and used in accordance with the instructions, may cause harmful interference to radio communications. However, there is no guarantee that interference will not occur in a particular installation. If this equipment does cause harmful interference to radio or television reception, which can be determined by turning the equipment off and on, the user is encouraged to try to correct the interference by one of the following measures:

- Reorient or relocate the receiving antenna.
- Increase the separation between the equipment and receiver.
- Connect the equipment into an outlet on a circuit different from that to which the receiver is connected.
- Consult the dealer or an experienced radio/TV technician for help.

**FCC Caution:** Any changes or modifications not expressly approved by the party responsible for compliance could void the user's authority to operate this equipment.

This device complies with Part 15 of the FCC Rules. Operation is subject to the following two conditions: (1) This device may not cause harmful interference, and (2) this device must accept any interference received, including interference that may cause undesired operation.

This equipment complies with FCC RF radiation exposure limits set forth for an uncontrolled environment. To maintain compliance with FCC RF exposure compliance requirements, please avoid direct contact to the transmitting antenna during transmitting.

**RF Exposure Warning!**

Please keep product 20cm away from your body or bystander during the radio operation. The typical handheld two-way radios were certified under mobile usage condition (i.e. keep 20cm away from the user body) and use of such radio closer than 20cm may exceed the US RF exposure limit and shall be avoided.

911 Mariner St., Brea, CA 92821  
PH: 714.257.0300 FAX: 714.257.0600  
TOLL FREE: 800.666.2654  
WWW.PRYME.COM

**Version 1.0.5 May 2011**

**STEP ONE: Charging the PRYMEBLU Adapter**

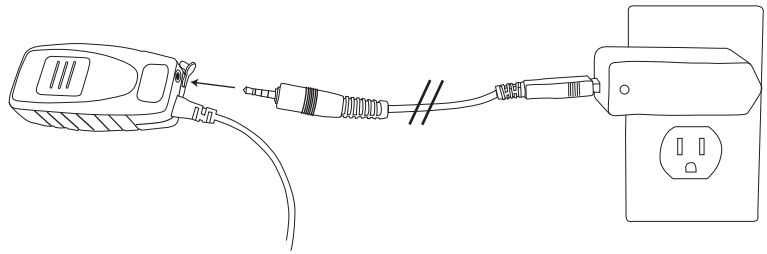
The PRYMEBLU Adapter has an internal Lithium Ion rechargeable battery pack which must be charged prior to operation, and must be recharged regularly. A fully charged battery will provide approximately 10 hours (or more) of operation before needing to be recharged, however, operating time can vary depending on usage and the condition of the battery pack. Recharge the battery regularly.

**To charge the PRYMEBLU Adapter:**

1. Ensure the PRYMEBLU Adapter is turned off, using the switch located on the back of the device.
2. Plug the supplied wall charger into a standard 120 volt AC outlet.
3. Plug the charger into the charge jack on the bottom of the PRYMEBLU Adapter. You will need to remove the protective rubber cover that is inserted into the charge jack. (To prevent dust and moisture from damaging your adapter, always ensure this cover is in place when you are not charging the adapter.)
4. Once the charging process has begun, the LED indicator on the top of the PRYMEBLU Adapter will show a constant blue light. Typical charge time is approximately 5-6 hours. Actual charge time will vary depending on several factors including the battery's charge state, condition, and age.
5. Disconnect the charger from the adapter when charging is completed.

**Charging Cautions:**

- Use only the wall charger supplied by the manufacturer. Do not use any other charger.
- Do not use a wall charger that appears to be damaged. (Example: frayed wires, melted plastic, etc.)
- Contact PRYME to get a new manufacturer-approved replacement charger.
- Do not tamper with or modify the PRYMEBLU Adapter or charger.
- Always turn the power switch to the off position when charging the PRYMEBLU Adapter.



**PRYME BLU ADAPTER USER'S GUIDE**  
**For Portable Radios with SIMPLE PIN accessory connectors**

The PRYME BLU Adapter allows you to use a compatible wireless headset or other audio accessory with your two-way radio.



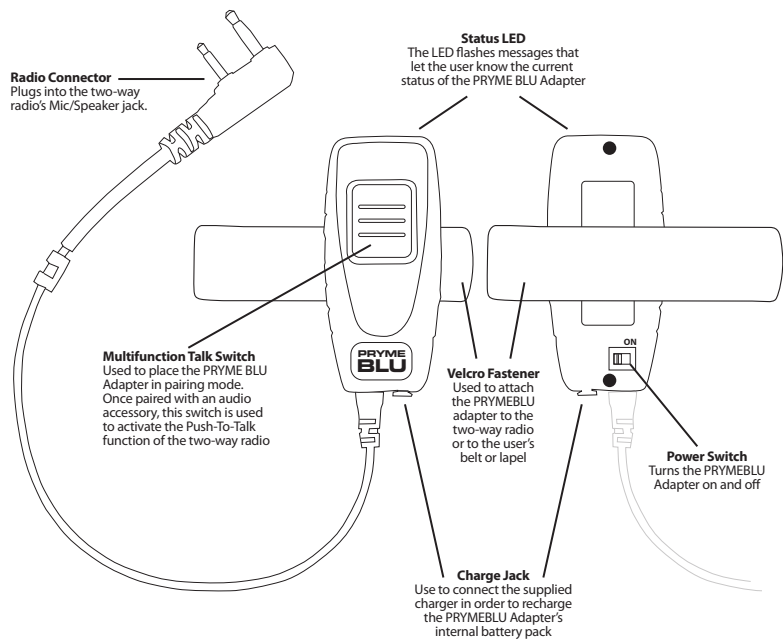
This manual applies to all PRYMEBLU BT-500 series adapters for radios with SINGLE or DUAL PIN accessory connectors..

**Bluetooth Adapter**  
**Model No.: BT-500 Series**  
**Made in Taiwan**

**FCC ID: N2E-BTM01**

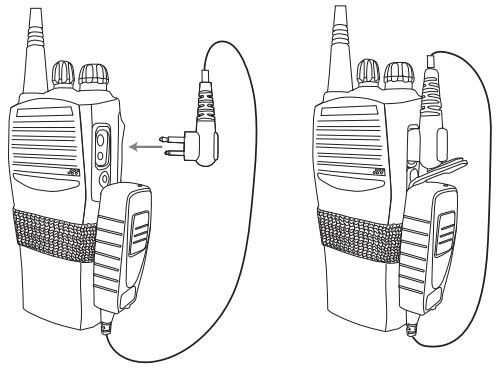
PRYME<sup>®</sup> and PRYME BLU<sup>™</sup> are trademarks owned by PRYME Radio Products, Brea CA. All other product or service names are the property of their respective owners.  
© 2011 PRYME Radio Products, Brea CA. All Rights Reserved

**Controls and Connection**



**NOTE: BT-501 Model shown.**  
Other models may vary slightly in appearance.

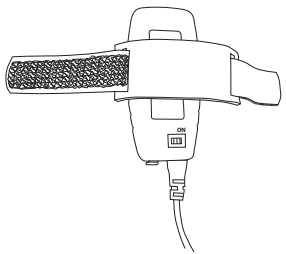
**Connecting the Adapter to Radio**



**STEP TWO: Connecting to a Two-Way Radio**

To connect your PRYME BLU Adapter to a two-way radio, follow these steps:

- \* Always turn off your two-way radio before connecting the PRYME BLU Adapter.
- \* Plug the PRYME BLU adapter's radio connector into the speaker-microphone / audio accessory jack of your two-way radio.
- \* You can attach the PRYMEBLU Adapter to your two-way radio or clothing using the Velcro fastener.



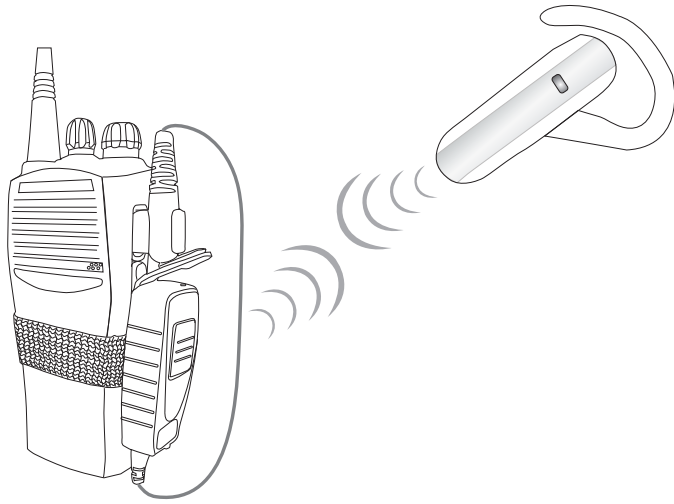
**USING THE FRICTION PAD**

The PRYMEBLU Adapter is supplied with a rubber Friction Pad. This pad provides additional protection and stability when using the Velcro Fastener to attach the adapter to a radio or other location.

To install the rubber Friction Pad do the following:

1. Open the Velcro Fastener on the back of the PRYMEBLU Adapter so that the two straps are separated.
2. Align the Friction Pad so that it is centered over the Velcro Fastener on the back of the adapter.
3. Slide one strap of the Velcro Fastener into one of the slots in the Friction Pad and pull the strap through.
4. Slide the other Velcro Fastener strap through the other slot in the Friction Pad.
5. Place the PRYMEBLU Adapter in the position you wish to mount it and close the Velcro Fastener.

## Pairing With an Audio Accessory



### STEP THREE: Pairing with an Audio Accessory

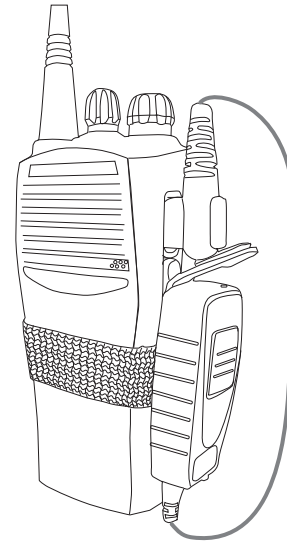
- \* When pairing the PRYMEBLU Adapter with a headset, make sure that both the PRYMEBLU Adapter and the two-way radio the adapter is connected to are both powered off.
- \* Turn the power switch on the back of the PRYMEBLU Adapter to the ON position while holding down the Talk button on the front of the PRYME BLU Adapter.
- \* Continue to hold the Talk button down for approximately three seconds. Release the Talk button when the status LED on the PRYMEBLU adapter begins to flash two times per second.
- \* The PRYME BLU Adapter is now in audio accessory pairing mode. Activate the pairing mode on your compatible wireless audio accessory following the instructions provided by the headset manufacturer.
- \* Once the wireless audio accessory and PRYME BLU Adapter are paired with each other, the status LED on the adapter will show a constant blue light for three seconds.
- \* If the PRYME BLU Adapter does not detect a compatible wireless accessory within 60 seconds of being put into pairing mode, the adapter will exit the pairing mode and resume normal operation.
- \* Once successfully paired, turn the two-way radio on. You will be able to operate your two-way radio using your compatible Bluetooth wireless accessory.

### Reconnecting to a Previously Paired Headset

Once the PRYMEBLU Adapter has been successfully paired to a Bluetooth headset it will remember that connection. If the headset is powered off or loses connection, the adapter will attempt to reestablish the connection. The adapter and headset will attempt to reestablish their link whenever when the radio/adapter and headset are both turned on and in within range of each other. Re-establishing this connection can take 10-60 seconds.

5

## Testing and Using the PRYMEBLU Adapter



### STEP FOUR: Transmit and Receive Operation

Once your PRYMEBLU Adapter and wireless Bluetooth headset have been paired together:

Received signals will be heard over your Bluetooth headset's speaker

When transmitting, the operator's voice is picked-up by the microphone in the Bluetooth headset

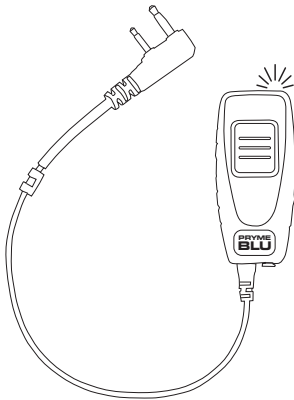
Push-to-Talk can be activated one of two ways:

- \* By pressing and holding the Talk button on the PRYME BLU Adapter
- \* Using an optional PRYMEBLU Wireless Bluetooth PTT (model BT-PTT, sold separately)

If you are using a PRYMEBLU PTT, you will first need to pair the adapter with the PTT device, using the instructions located in the PRYMEBLU PTT User's Guide.

6

## Status LED Messages



The meanings of the various status LED messages shown by the PRYMEBLU Adapters are shown on the following table:

LED INDICATION	MEANING
One single blue flash per second	Normal operation
Two blue flashes per second	Headset pairing mode active
Three blue flashes per second	PRYMEBLU PTT pairing mode active
One long blue flash for 3 seconds	Successfully paired or re-paired
Constant Red	PTT activated
Constant Blue	Charge mode
Blue flashes while red shows constantly	Low battery or hardware failure
No indication	Adapter is powered off

## Troubleshooting

### ***My wireless audio accessory will not pair with the PRYME BLU Adapter.***

Follow the instructions to place the PRYME BLU Adapter into the correct pairing mode and then activate the pairing mode on the accessory. Make sure that the PRYME BLU Adapter and accessory being paired are within one meter of each other.

### ***My wireless audio accessory or worked before, but is not working now.***

Make sure that the PRYME BLU adapter is properly connected to the two-way radio and that the radio is turned on. Ensure that your wireless audio accessory and the PRYMEBLU Adapter both have fully charged batteries and are turned on. If the devices will still not work, re-pair the PRYME BLU adapter to the wireless accessory.

### ***After Charging, My PRYMEBLU Adapter Does Not Power Up***

Power cycle the PRYMEBLU Adapter by setting the power switch to off, waiting ten seconds, and then turning the power switch on. The adapter should now operate normally. Always make sure that the power switch on the PRYMEBLU PTT is turned to the off position when charging.

7

## SUPPORT AND WARRANTY

PRYME Radio Products warrants this product against defects in materials or workmanship for a period of one year from the date of retail purchase. PRYME will repair or replace a defective unit, at our option, without charge for parts or labor. The limited warranty is extended only to the original purchaser and is valid only to consumers in the United States and Canada. It does not cover damage or failure caused by or attributable to Acts of God, abuse, misuse, improper or abnormal usage, faulty installation, improper maintenance, lightning, or other incidences of excessive voltage, or any tampering or repairs by other than a PRYME authorized repair facility. It does not cover replacement of consumable parts, transportation costs, or damage in transit.

Repair or replacement under the terms of this warranty does not extend the terms of this warranty. This warranty can only be modified by an officer of PRYME Radio Products, and then only in writing. Should this product prove defective in workmanship or material, the consumer's sole remedies shall be such repair or replacement as provided by the terms of this warranty. Under no circumstances shall PRYME Radio Products be liable for any loss or damage, direct, consequential, or incidental, arising out of the use of or inability to use this product. Some states do not allow limitations on how long an implied warranty lasts or the exclusions or limitations of incidental or consequential damages, so the above limitations or exclusions may not apply to you. This warranty gives you specific legal rights. You may also have other rights, which may vary, from state to state.

For support or warranty service on your PRYME product, contact us at 1-800-666-2654 or visit us on the web at [www.PRYME.com](http://www.PRYME.com).

### COPYRIGHT AND TRADEMARK INFO

© 2011 PRYME Radio Products, Brea CA. All rights reserved.

PRYME® and PRYME BLU™ are trademarks owned by PRYME Radio Products. All other product or service names are the property of their respective owners.

**DISCLAIMER:** The Bluetooth wireless link used by PRYME BLU products is an open standard, unsecured technology. As such, it is not recommended for first-responder or other mission critical users.

8